



Contents

HM DRYERS.....	2
INSTALLATION PROCEDURE	5
QUICK START-UP GUIDE.....	5
DRYER OPERATION TROUBLE SHOOTING.....	7
PART LIST	9
ADVANCED DRYER CONTROLS GUIDE.....	11
MAIN OPERATING SCREEN:	11
MENU INSTRUCTIONS:.....	11
TO START DRYER:.....	12
TO SET TEMPERATURE:	12
MAIN MENU SELECTIONS	13
MAIN MENU SELECTIONS	14
MENU DEFINITIONS:	17
OTHER FEATURES:.....	19
SETTINGS:	20
ERROR MESSAGES:	21
TEMPERATURE SETBACK THEORY.....	22

HM DRYERS

FEATURES:

The HM series dryers are a fully assembled dryer and hopper combination where the dryer is mounted on the hopper to be positioned on top of molding machines. They are ideal where floor space is not available and material changes are infrequent. The HM dryer series utilize the ARID-X dual bed design that provides a constant supply of dry air to the material hopper.

Arid-X Two Bed Design

While one bed is removing moisture from the process air the other is regenerating by heating the desiccant to a high temperature. Once the regenerated bed cools down, the Zone Valve switches the airflow, and the newly regenerated bed is used to desiccate the process air stream. The saturated bed is now regenerated in the same manner, completing the regeneration cycle

The airflow design of the ARID-X dryers makes the regeneration cycle more efficient because we utilize a small amount of the desiccated process air rather than ambient air to regenerate the desiccant bed. This reduces the impact of the high moisture content of the ambient air, which would contaminate the desiccant bed, and allows the dryer to attain a lower dew point. Please see the Air Flow Schematic on Page 4.

Dryer process operating temperatures are 140 degrees F (minimum) to 325 degrees F (maximum) with an accuracy of +/- 3 degrees. When the drying temperature is 275 degrees F or higher, it is necessary to install a water-cooled heat exchanger on the return hose of the dryer to ensure maximum dryer efficiency. If you do not have a heat exchanger and will be operating 275 degrees F or higher, please contact the factory for heat exchanger pricing.

Hopper Design

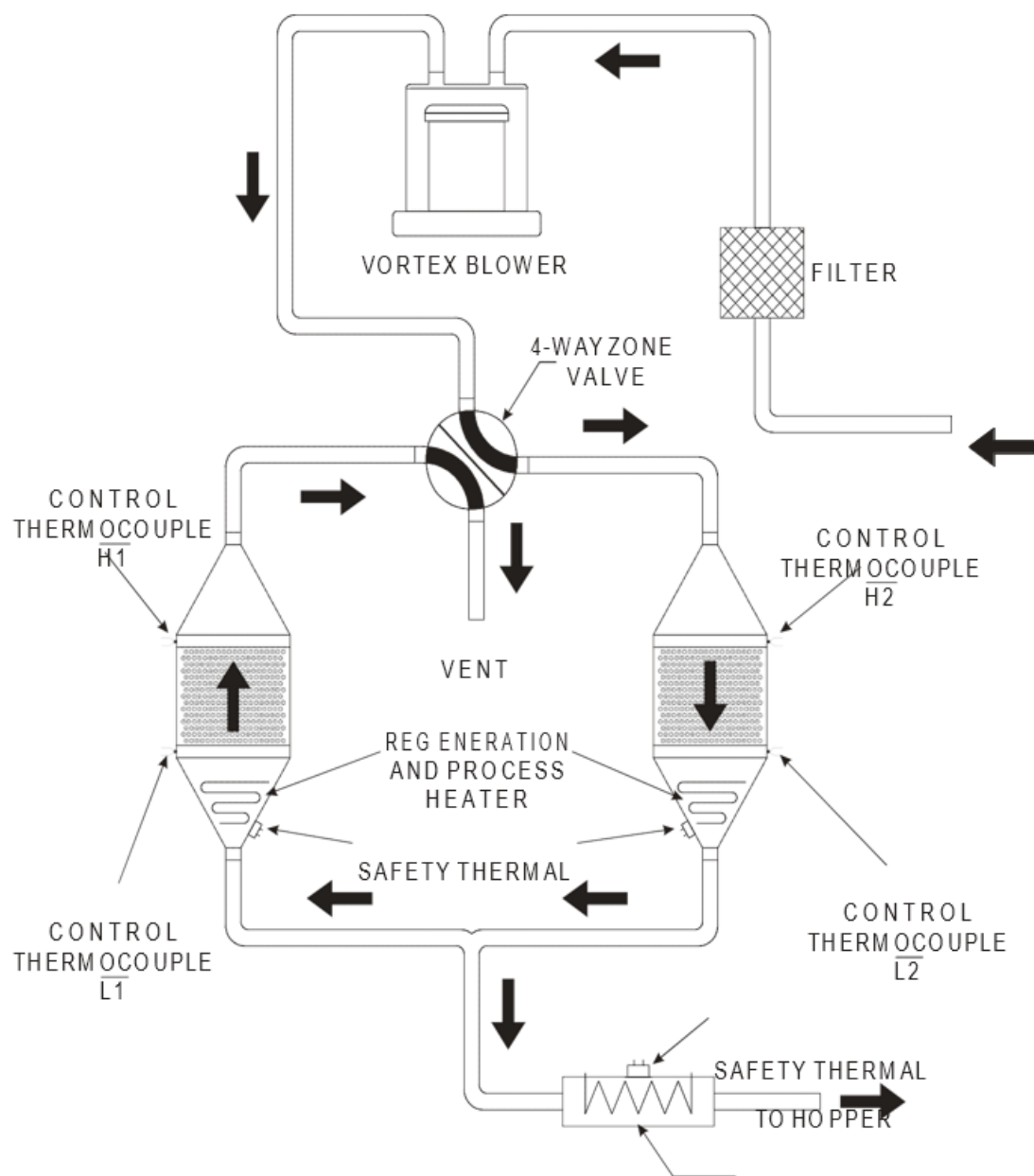
Dri-Air's "all stainless" hopper design utilizes a stainless-steel inner shell surrounded by a stainless-steel jacketed insulation layer. The easily removable stainless steel spreader cone promotes proper material flow to ensure that the material is dried efficiently and no dried material is left at the hopper bottom that needs to be fed out prior to operating. You must ensure that your hopper is adequately sized for your usage rate and is kept filled, to ensure that you have sufficient time to dry the material.

ADC Advanced Dryer Controls

The ARID-X series can be supplied with the Advanced Dryer Control (ADC).

The new ADC (Advanced Dryer Control) was introduced for optimum operation of the dryer and is as user friendly as possible. The easy-to-see alphanumeric display indicates all operating parameters and leads the operator through a menu driven program for all settings and information. All fault conditions are shown on the display in a format that is easy to understand.

As with earlier designs, the ADC is driven by thermocouples strategically located in the towers, hoses to the hoppers, and other locations to properly control the operation of the dryer. Other inputs monitor the performance of the dryer for safe and efficient operation.

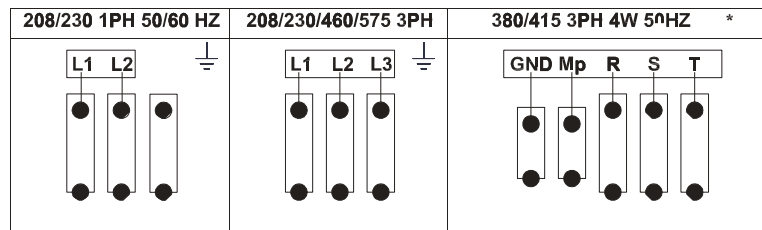


INSTALLATION PROCEDURE

Electrical Connection:

Open electrical access door on the front of the machine by turning the disconnect off and turning the lower clamping screw 1/2 turn counterclockwise. Locate the disconnect by following the operating handle down to the electrical panel.

Insert the incoming power cable or conduit through the hole provided on the side of the machine. Wire incoming power to the top of the disconnect as shown in the diagrams below.



« **use approved wire and fastening means** »

3 PHASE DRYER INSTALLATION CHECK FOR CORRECT MOTOR ROTATION BEFORE RUNNING DRYER

To check motor rotation.....

Turn on the power to the dryer and press the **ON/ START** touch pad and then immediately press the **OFF/STOP** touch pad. Observe the cooling fan on the top of the blower motor and verify the fan is turning clockwise. If the motor is not turning clockwise, switch any two adjacent supply wires.

QUICK START-UP GUIDE

Operating this unit is very simple. Once the dryer is connected to the facility power supply, the unit can be started by turning the disconnect handle located in the upper right-hand corner of the electrical panel enclosure to the ON position and pressing the POWER button on the Control Panel Key Pad. To shut the dryer off, simply push the POWER button on the Control Panel Key Pad.

Setting the process air temperature is done using the Digital Controller.

For a more detailed explanation, please refer to the ADC control section later in this manual.

Temperature:

Set the process temperature by either pressing the “TEMP SET” button or “MENU” button.

High Temp Alarm Delta:

Press the “MENU” button and then arrow down to the ALARM MENU. Press enter to access setting. Enter a new delta using the keypad and press ENTER. Remember this setting is a delta above the set temperature and not an actual temperature.

Temperature Setback:

Going to the “SETBACK MENU” and pressing enter can actuate the temperature setback feature. The display will indicate how to turn on or off this feature. The setback delta is factory set for 30 degrees F based on field experience. If this value needs to be changed, go to the “SETBACK MENU” and arrow down to SETBACK DELTA. A new value can then be entered. All other variables are located in the FACTORY SETTINGS and will require assistance by our servicemen to make any changes.

Selection Of Degrees F or C:

This setting is located in the menu section “SYSTEM SETUP”.

Seven-Day Timer:

Select the “SEVEN-DAY TIMER” menu. Press enter to access the days of the week and ENTER again to set the times. Only one start and stop time per day is allowed. All times are in Military time. See the section on menu selection for more detail.

DRYER OPERATION TROUBLE SHOOTING

The Advanced Dryer Controls were designed for quick diagnosis of problems. The following steps should be done before proceeding with other diagnostic steps. Alarm codes that occur on the ADC controls are further detailed in the controls section of this manual.

Check the Power Circuit:

1. Incoming fuses or circuit breaker
2. Check secondary fuses or circuit breakers.
3. Is power supplied to the unit?
4. Check heater continuity using a volt ohmmeter.

Compressed Air:

For those models that require compressed air.

5. Is compressed air connected with at least 60 PSI
6. Check water separator and drain if necessary
7. Pressure gage should read 60 PSI

Air Flow Circuit:

8. Ensure Zone Valve position is correct. Remove the hoses from the top of the desiccant towers and compare the airflow to that in the provided airflow diagram in this manual.
9. Make sure that all hoses are connected, not crushed, and free from obstructions.
10. Inspect filter and make sure cover is tight and the filter is clean and in good condition.

Control Circuit:

11. Using the ADC motherboard indicator lights as a guide for the dryer regeneration cycle, check that all inputs/outputs are proper for the part of the regeneration cycle that the machine is in.
12. Monitor the ADC output lights to ensure the corresponding LED on the power solid state relay is illuminated and there is an output voltage to the heater.

Operating Conditions:

13. Check the process temperature. It should not be set below 140° F (60° C) because the unit will go into high temp alarm.

If the temp exceeds the set point check the following:

1. Remove the hose from the top of the hopper to check air flow. There should be air flow out of the hopper with a suction on the hose. If there is little or no flow, check the inlet hose.
2. Inspect the filter to make sure that it is clean and not affecting the air flow.
3. Check to see if one of the solid-state relays has failed on. Using an ammeter or voltmeter on the output to the heater, see if there is power when the LED is not lit which will indicate a failed relay.
4. Check the valve position.

The Dri-Air valve is designed to provide very little flow restriction and no leakage. It incorporates high temperature spool for years of trouble-free service. The electrical controls are built into the end of the valve for long lasting performance.

DO NOT PUT FINGERS INTO VALVE WITH POWER ON

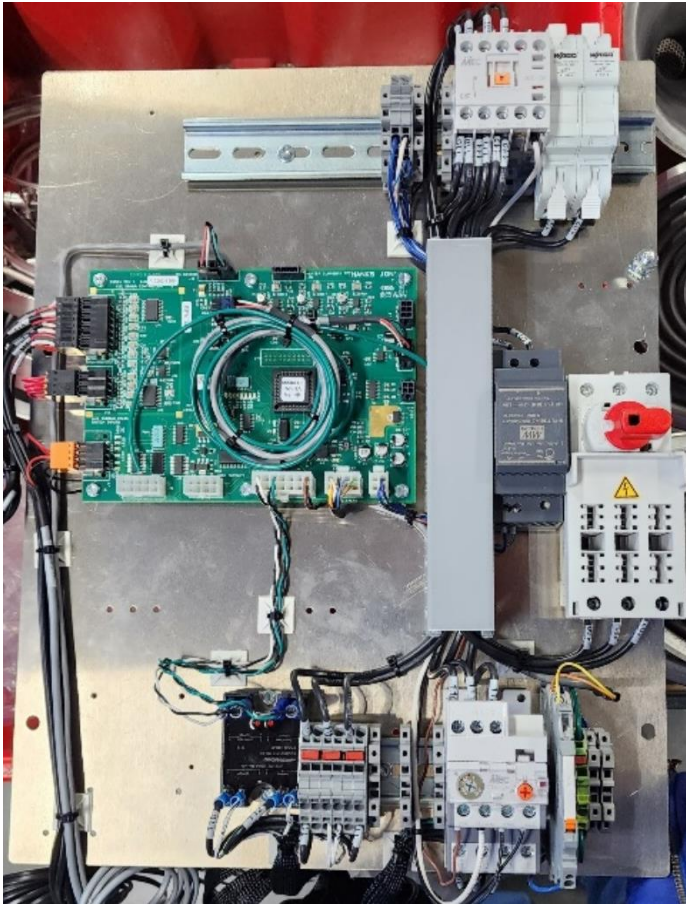
Check all electrical connections to make sure they are tight.
Contact factory with the serial number of the dryer for a replacement valve.

PART LIST



Description	Part #	Amount
Valve Zone STC 24V Assembly Smart touch	89167	1
Blower 25CFM 3PH	86867	1
Sensor RH ADC Control for 84936 RH Board Assembly	85374	1
Gasket 6" for 18-35 towers	81028	4
Filter Element 25-35 CFM Dryers	81055	1
Thermocouple 1/8" x 6" Female Type J	82174	4
Switch Pressure Ultra Low 1.5" for ADC Blower Rotation	86155	1
Thermocouple 1/8" x 3" Female Type J	87361	1

Voltage	<u>208V</u>	<u>230V</u>	<u>400V</u>	<u>480V</u>	<u>575V</u>
Cone	83342	83373	83982	83374	84235
Process	82343	82343	84204	82319	84065



Description	Part #	Amount
Contactor 12A 600V 4P 24VDC LS	85355	1
Overload .4-.63 Amp Overload .63-1 Amp – LS Interchangeable w/ Carlo Gavazzi	85358 85359	1
Relay SS 40A 480V 2P 15-32 VDC	85364	1
Switch Disconnect 40A (Handle, Shaft, Switch)	85365	1
Relay 1P DT 24VDC 6A card wago	89384	1
ADC Display Board	84930-1	1
ADC Keypad Membrane	85197	1
Mother Board ADC Rev3A ADC/HMI	85584-1	1
Power Supply 24VDC 30W STC	89259	1

ADVANCED DRYER CONTROLS GUIDE

MAIN OPERATING SCREEN:

Indicates Dryer is on.....

*Indicates Setback is Turned On

Dryer	*ON
Process	180F
Setpoint	(180)
Dewpoint	-45 Z1H

Indicates Dryer is operating at 180 °F.....

Dryer	*ON
Process	180F
Setpoint	(180)
Dewpoint	-45 Z1H

Indicates Dryer is in setback mode
with a new setting of (180 °F).....

Dryer	*ON
Process	180F
Setpoint	(180)
Dewpoint	-45 Z1H

Indicates a dewpoint of -45 °F and
Z1D indicates the status of the dryer mode.
Zone 1 is in regeneration heating mode.....

Dryer	*ON
Process	180F
Setpoint	(180)
Dewpoint	-45 Z1H

MENU INSTRUCTIONS:

To make settings or view conditions within the dryer requires accessing the proper menu.

Process temperature settings can easily be changed using the **TEMP/SET** button.

To access the proper menu, press the **MENU** button.

Using the up and down arrows, go to the screen for the setting you want to make.

Press the **ENTER** button.

You can access the level within the menu selection using the up and down arrows.

After making changes, press the **ENTER** button.

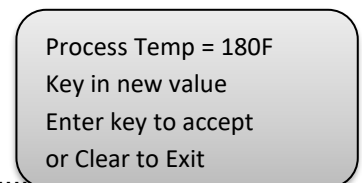
To return to the operating screen at any time, press the **CLEAR** button
This will happen automatically after a 15 second Delay in any screen.

Check for correct day and time.

If everything is proper- tests passed.
If a defect is detected, screen will indicate fault.

*Indicates setback is activated
(180) Indicates setback temperature
Z1D Indicates dryer status

Set Temperature.....



MAIN MENU SELECTIONS

Set temperature at hopper.....

Main Menu
Set Process Temp
↑ or ↓ to Scroll
Use Enter to select

Enable or disable temperature setback
Adjust delta
Adjust setback temperature inhibit time.....

Main Menu
Setback Setup
↑ or ↓ to Scroll
Use Enter to select

Set /Start and /Stop time per day.
Set time on clock.....
Set day of week.

Main Menu
Seven Day Timer
↑ or ↓ to Scroll
Use Enter to select

Set high temperature alarm.....
Enable/disable dewpoint alarm.

Main Menu
Alarm Setup
↑ or ↓ to Scroll
Use Enter to select

Select °F for °C.
Current check ON/OFF.
Temperature calibration.....
Dewpoint calibration.
Loader on time.
Loader Delay.

Main Menu
System Setup
↑ or ↓ to Scroll
Use Enter to select

Factory settings.....
(Factory use only)

Main Menu
Factory Settings
↑ or ↓ to Scroll
Use Enter to select

View event log. View temperatures.....

Main Menu
Diagnostics
↑ or ↓ to Scroll
Use Enter to select

MAIN MENU SELECTIONS

Main Menu
Set Process Temp
↑ or ↓ to Scroll
Use Enter to select



Process Temp = ____
Key in new value
Enter key to accept
or Clear to Exit

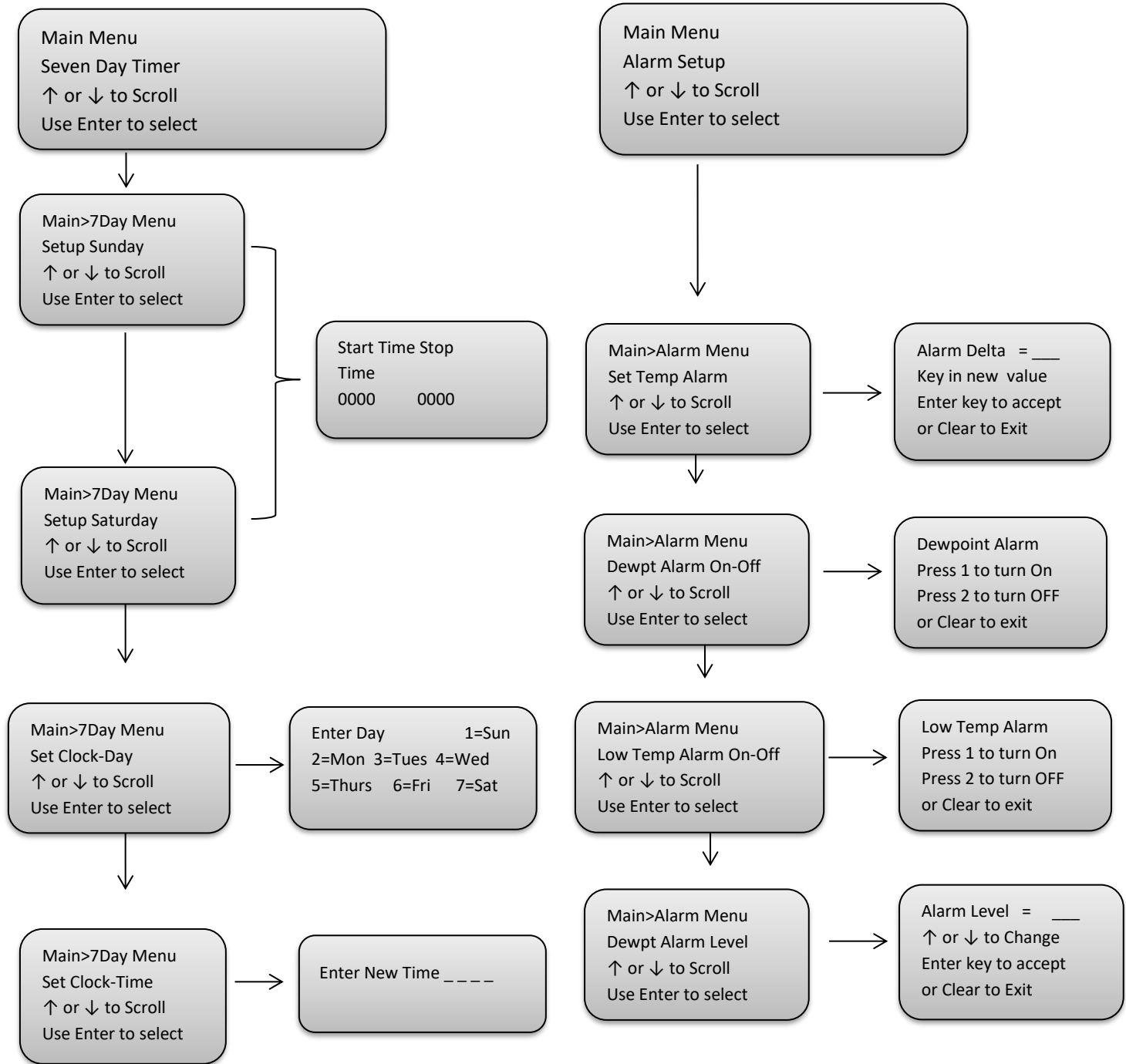
Main Menu
Setback Setup
↑ or ↓ to Scroll
Use Enter to select



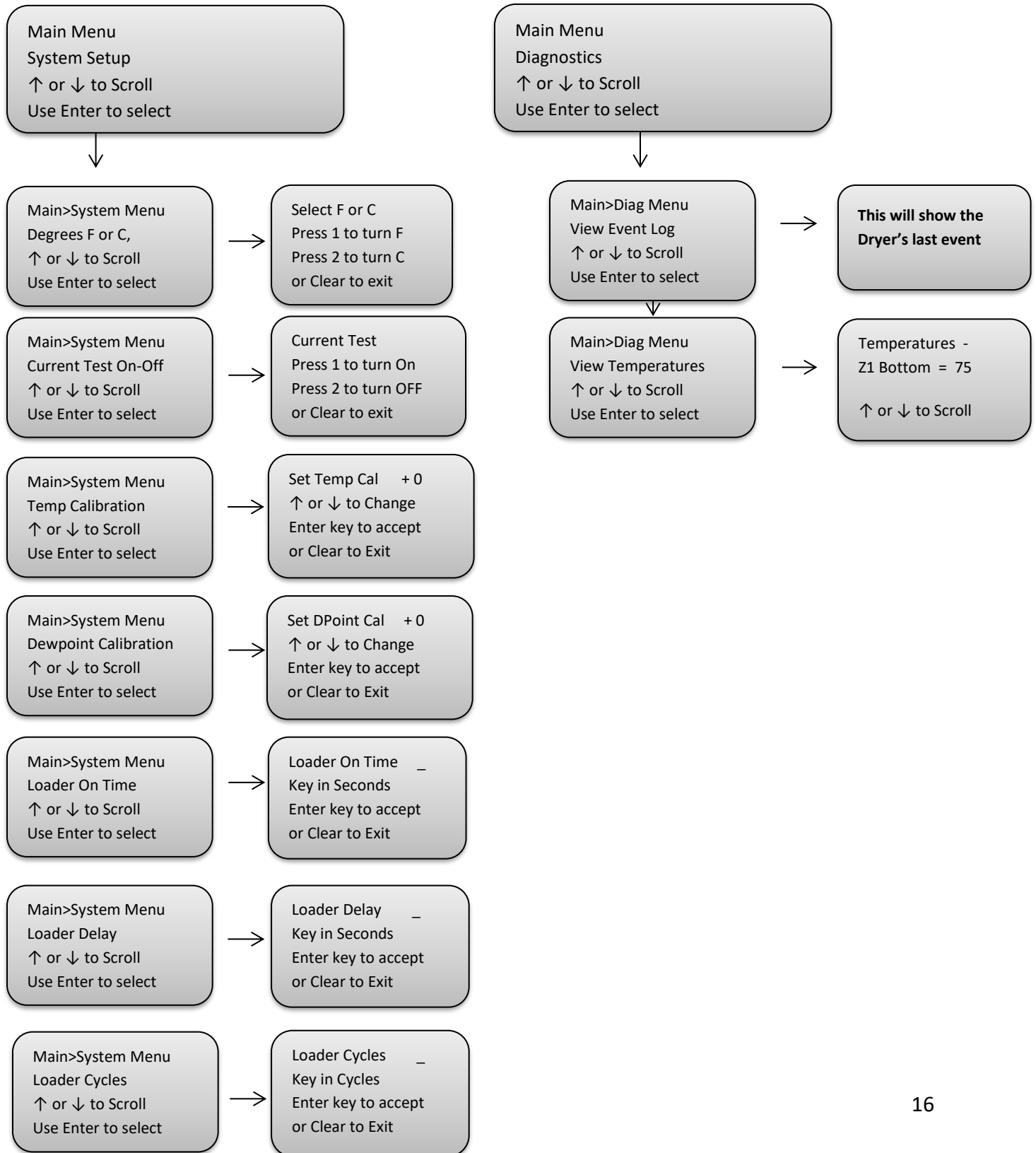
Enter password
Then press Enter

Password = 1285

MAIN MENU SELECTIONS (cont.)



MAIN MENU SELECTIONS (cont.)



MENU DEFINITIONS:

1. Set Process Temp

This screen allows the operator to easily change the process temperature.

2. Setback Setup

For those dryers with the setback option, this screen allows the operator to activate the setback option and to enter the setback delta from the process temperature for the setback temperature. Remember this setting is a delta rather than the actual setback temperature. For example, if the process temperature is 250 °F and the delta is set for 30, the actual setback temperature will be 220 °F. This option eliminates over drying of the resin if for any reason the process is interrupted for a period of time. The dryer cannot be set with a setback delta equal to or greater than the high temp alarm delta.

3. Seven-Day TIMER

The dryer can be automatically started and stopped once per day using this feature. In this menu, the operator can select the day of the week and time of day to turn the dryer on and off. The days of the week are specified as Sunday, Monday, etc. and the time is set in Military time. Each day can be set to start and stop, start only, stop only, or have no events. A setting of 9999 means there is no time set.

4. Alarm Setup

The high temperature alarm is factory set for a 50 °F delta above the set temperature. Again, this is a delta setting, so a setting of 50 means the high temperature alarm will activate at 50 ° above the set temperature. While this setting does not normally have to be changed, this screen is used to make changes. The dewpoint alarm can be turned on or off within this menu also. The high temperature alarm also shuts the dryer down and cannot be de-activated.

5. System Setup

This section is used to configure the dryer for various parameters.

- Selection of degrees F or C
- Temperature offset for calibration
- Dewpoint offset for calibration
- Closed loop loader fill time (With optional closed loop loader)

- Loader Delay time (With optional closed loop loader)

6. Factory Setup

This section is reserved for factory settings and can only be accessed by a password. If settings need to be changed in the field, consult one of our servicemen to make the necessary changes.

7. Diagnostic Menu

The diagnostic menu is used primarily for trouble-shooting assistance. It allows our servicemen and qualified repair personnel to view a history of events and other pertinent information to locate the problem in a shorter period of time. Z1 indicates Zone 1 and Z2 indicates Zone 2 in all displays. Included in this section:

- **View Event Log** - The last 128 events are stored in this area and can be reviewed to spot any anomalies of operation. The last event is displayed first with the prior events visible by pressing the down button.
- **View Temperatures** - All internal temperatures can be viewed in this section while the dryer is running. Many factors of operation can be determined based on the various temperatures.

OTHER FEATURES:

Blower Error

If for any reason the phasing of the incoming power is incorrect, the blower will run in the wrong direction causing the dryer to malfunction. If the blower direction is not correct, the dryer will shut down and an error will be displayed. This condition can occur upon installation or when moved within the plant.

Automatic Restart

In the event of a power failure, the dryer will not operate. If the power is restored within 30 seconds, the ADC control will check the status of the dryer and any alarms and restart the dryer if all tests pass. This feature eliminates having to manually start our dryers for a short duration power outage.

Loop Break Alarm (indicated as “LOOP” in an alarm)

This feature checks all actual temperatures compared to their set values to see if they are approaching the set value. If the temperature does not reach its set value, the dryer is shut down and the heater in question is displayed. One of the main reasons for this feature is to locate a problem before it can cause any damage. One such condition would be if the process thermocouple were to be removed from the input port of the hopper resulting in an incorrect temperature and possible melt down of the resin.

Open Thermocouple Protection

All thermocouples are constantly monitored for correct operation. If one should fail, the dryer will stop and an alarm indicating the failed thermocouple will be displayed.

Temperature Setback (optional)

This option prevents material from being over dried if the process is interrupted for a period of time. When activated, the return temperature is compared to the set temperature. If they are within certain specifications for a period of time, the process temperature will be set back to a level where continued drying will not take place. This setback condition is displayed by () parenthesis around the set temperature on the display.

SETTINGS:

Temperature:

Set the process temperature by either pressing the “TEMP SET” button or “MENU” button.

High Temp Alarm Delta:

Press the “MENU” button and then arrow down to the ALARM MENU. Press enter to access setting. Enter a new delta using the keypad and press ENTER. Remember this setting is a delta above the set temperature and not an actual temperature.

Temperature Setback: Password = 1285

Going to the “SETBACK MENU” and pressing enter can actuate the temperature setback feature. The display will indicate how to turn on or off this feature. The setback delta is factory set for 30 degrees F based on field experience. If this value needs to be changed, go to the “SETBACK MENU” and arrow down to SETBACK DELTA. A new value can then be entered. All other variables are located in the FACTORY SETTINGS and will require assistance by our servicemen to make any changes.

Selection Of Degrees F or C:

This setting is located in the menu section “SYSTEM SETUP”.

Seven-Day Timer:

Select the “SEVEN-DAY TIMER” menu. Press enter to access the days of the week and ENTER again to set the times. Only one start and stop time per day is allowed. All times are in Military time. See the section on menu selection for more detail.

ERROR MESSAGES:

There are a few conditions that will cause an alarm condition. Check the following areas:

- Clean or replace return air filter. **Turn off the dryer while cleaning!** Blockage in this area will affect the performance of the dryer and may cause an alarm.
- Check that all hoses are connected and intact. Ground all material conveying hoses with the imbedded copper wire.
- Check the inlet and outlet of the hopper for proper airflow.

“Z1 Bottom TC”

Is an example of a thermocouple failure. For this failure Z1 indicates Zone one, etc. The normal failure of a thermocouple is an open condition.

Using a multi-meter, check the thermocouple in question to see if it is open, If the thermocouple is functional, check all connections on the thermocouple and connectors. Replace the defective thermocouple with a new one from our parts department. The thermocouple must be a J type and ungrounded. When replacing the lower thermocouples over the heaters, make sure it is tied down to the bottom screen using the stainless-steel wire in place. Failure to do so will result in improper operation of the dryer!

“P1 Hi Temp”

Indicates the dryer has been shut down because of a high temperature condition of the process heater. Check the airflow to the hopper in question. Check the solid-state relay for operation

“Safety Error”

Indicates that the blower overload has tripped. Check the setting of the overload and condition of the blower.

“Loader Alarm”

Indicates the optional closed-loop loader has tried 3 times to load the receiver and no material has been loaded. Check to see if the material supply is adequate and all hoses are in the correct location. To reset the alarm after fixing the problem, either satisfy the proximity sensor or turn the main power off and back on.

“Blower Alarm”

If for any reason the phasing of the incoming power is incorrect, the blower will run in the wrong direction causing the dryer to malfunction. If the blower direction is not correct, the

dryer will shut down and an error will be displayed. This condition can occur upon installation or when moved within the plant.

TEMPERATURE SETBACK THEORY

The optional temperature setback feature for the ADC control prevents over drying of the material due to excessive residence in a drying hopper at the suggested drying temperatures. This is especially true for Nylon, which can be over dried leading to degradation of the resin resulting in molding problems and brittle parts. It can also be useful in hopper bank applications to dry material to specific moisture levels.

When the temperature setback is actuated, a timer is started allowing the material to dry for the specified setback inhibit time. Once this time has expired, the return temperature from the hopper is compared to the process temperature using a thermocouple located in the return port of the hopper. If the return temperature is within a specified delta from the process temperature, the process temperature is reduced by the programmed setback delta. This indicates that the material has been dried and further drying is not required.

The process temperature is restored to the set temperature when the return temperature reaches 100 °F indicating new material has been added and needs drying. The process temperature will remain at the set temperature until the return temperature again reaches the delta from the setpoint. The process temperature will then be setback by the setback delta.

DEFINITIONS:

Setback Delta

The Setback Delta setting is the amount below the setpoint that the process temperature will be reduced by. If the process temperature is set to 250 °F and the setback delta is set at 30, the setback temperature will be 220 °F. Our experience has shown the factory setting of 30 for the setback delta is ideal for most resins.

Caution: Do not enter a Setback Delta that will reduce the setback temperature below 140 °F, as the dryer will not maintain temperatures below 140 °F.

Setback Inhibit

The Setback Inhibit setting is the time in minutes to dry the material before the setback can be initiated. The setting has a range of 10 to 360 minutes and is factory set for 120 minutes. The inhibit time is started when the hopper is turned on, a new drying temperature is entered, or the setback option has been selected.

Setback Display

Selection of the setback option is shown on the main screen by an asterisk * prior to the hopper number. Parenthesis around the setpoint temperature indicates the temperature has been setback. The setback temperature is then displayed.

